

ATLAS V

FLAT TOP BARGE



PRINCIPAL PARTICULARS

VESSEL TYPE	FLAT TOP BARGE
SHAPE	SHIP SHAPE
YEAR OF BUILT	2013
PLACE OF BUILT	CHINA
FLAG	PANAMA
CLASS	RINA
GRT	2,144 TONS
NRT	643 TONS

PRINCIPAL DIMENSIONS

LOA	82.30 MTRS
BREADTH MOULDED	21.40 MTRS
DEPTH MOULDED	4.90 MTRS
DRAFT MOULDED	3.20 MTRS

CARGO CAPACITY

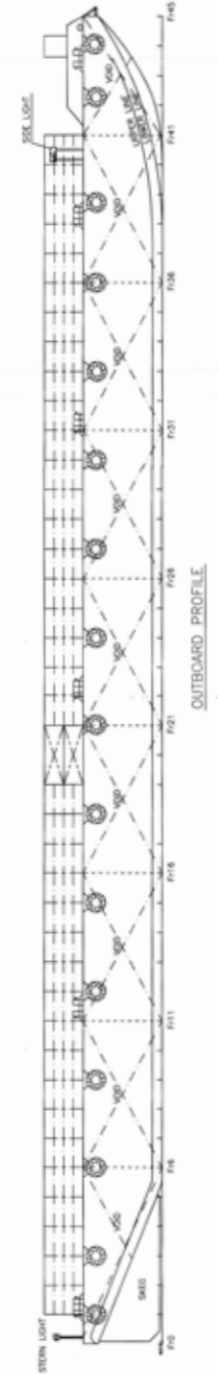
DEADWEIGHT	5,500 TONS
SUMMER	5,000 TONS
TROPICAL	5,100 TONS

DECK PARTICULARS

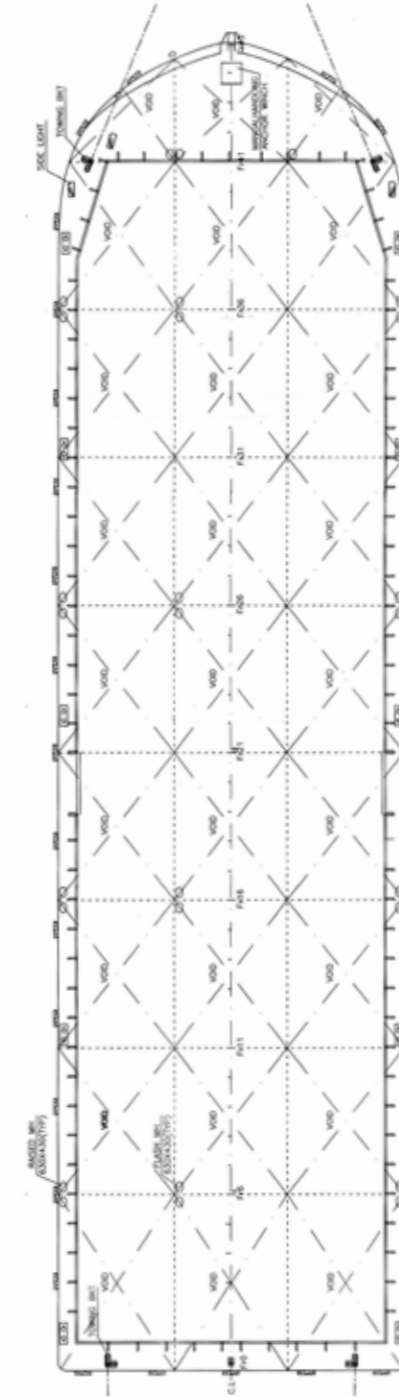
CLEAR DECK AREA	73.2 MTRS X 19.1 MTRS
DECK STRENGTH	15 T/M2

OTHER PARTICULARS

DOORS	BOTH SIDES, MIDSHIP
SIDEWALL HEIGHT	4 MTRS
ANCHOR	YES - FORWARD



OUTBOARD PROFILE



MAIN DECK PLAN

PRINCIPAL DIMENSIONS

LENGTH OVERALL	82.30M(270'-0")
BREADTH MOULDED	21.40M(70'-0")
DEPTH MOULDED	4.90M(16'-0")
DRAFT MOULDED	3.20M(10'-6")
DECK LOADING	7.07T/M
DEADWEIGHT	5500T(12100000)

270' DECK CARGO BARGE

GENERAL ARRANGEMENT

NO.	1	DATE	1/1/13
REV.		DATE	
BY		DATE	
CHECKED		DATE	
APPROVED		DATE	